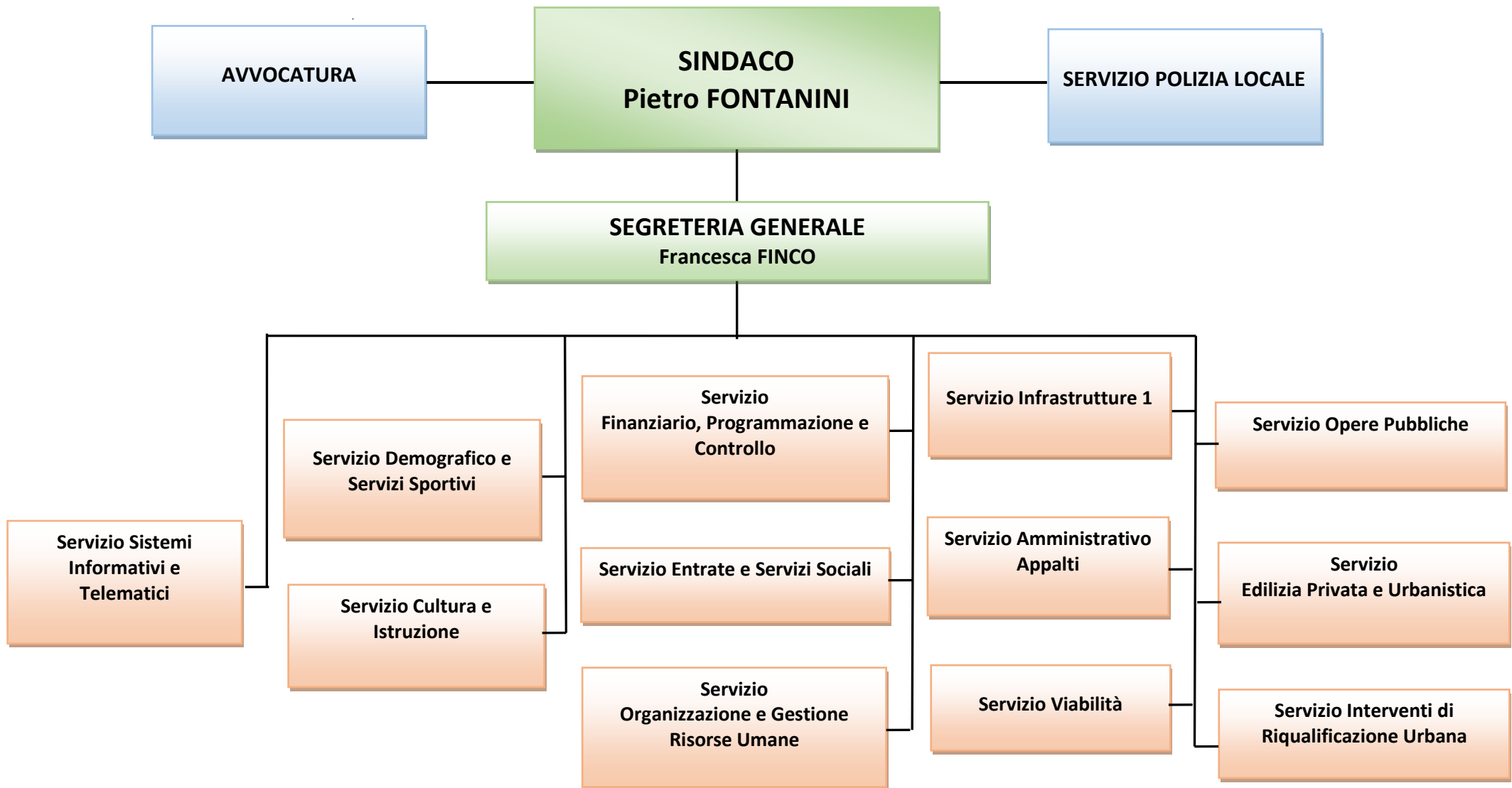
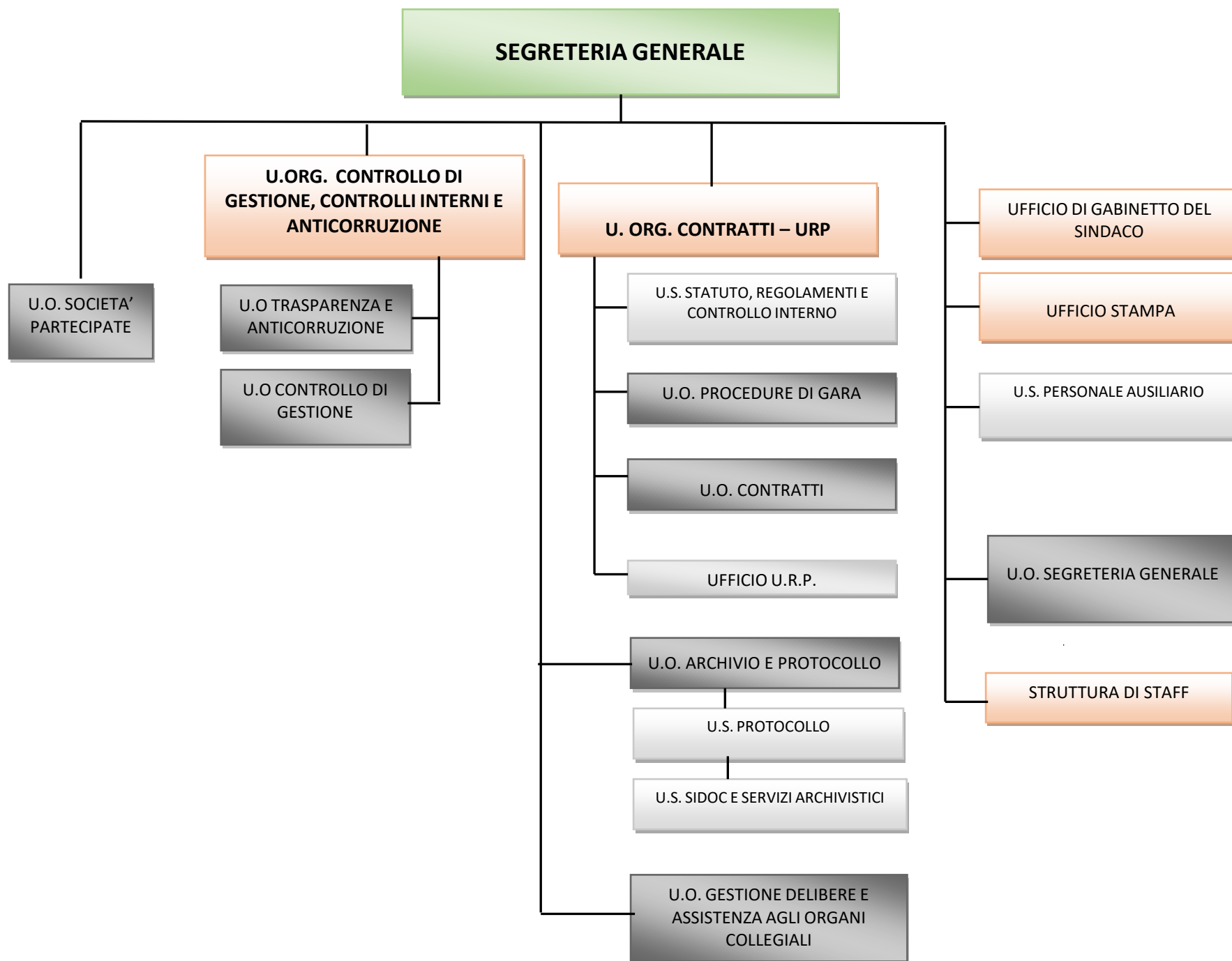
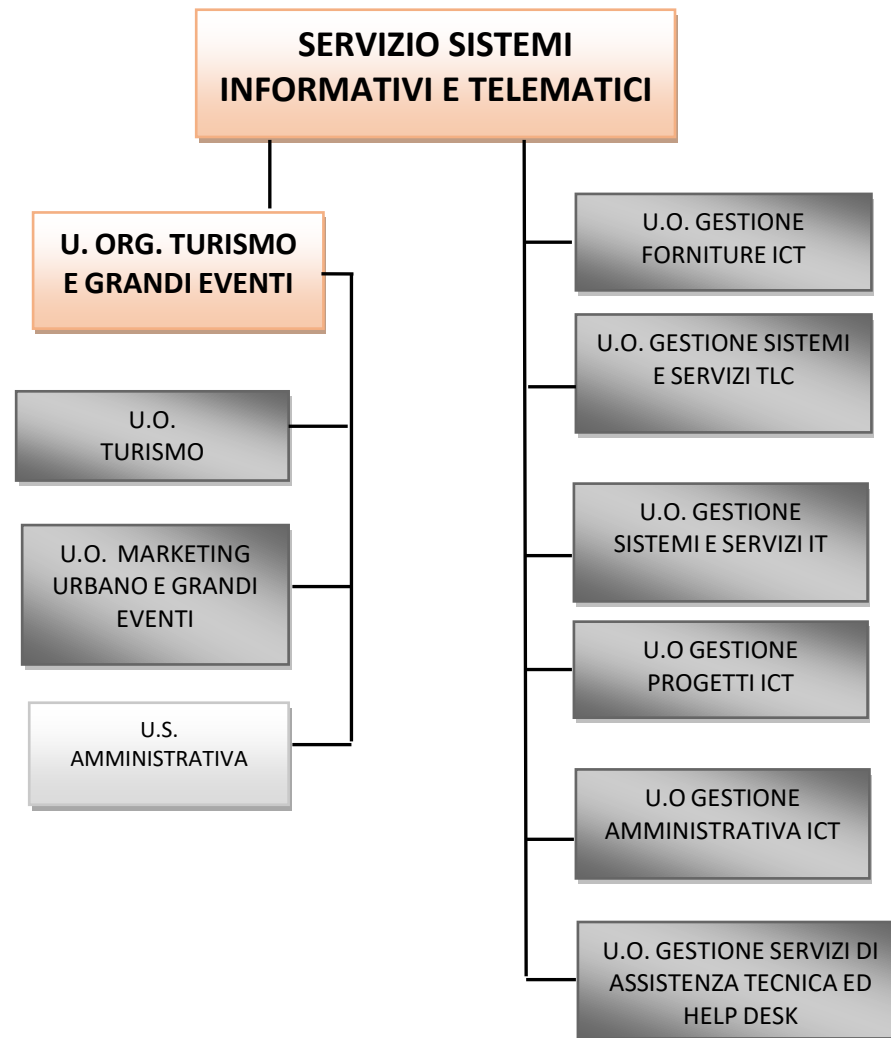


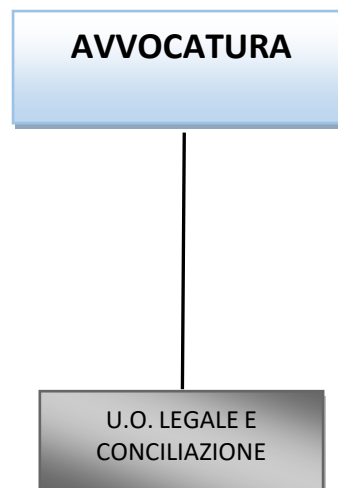


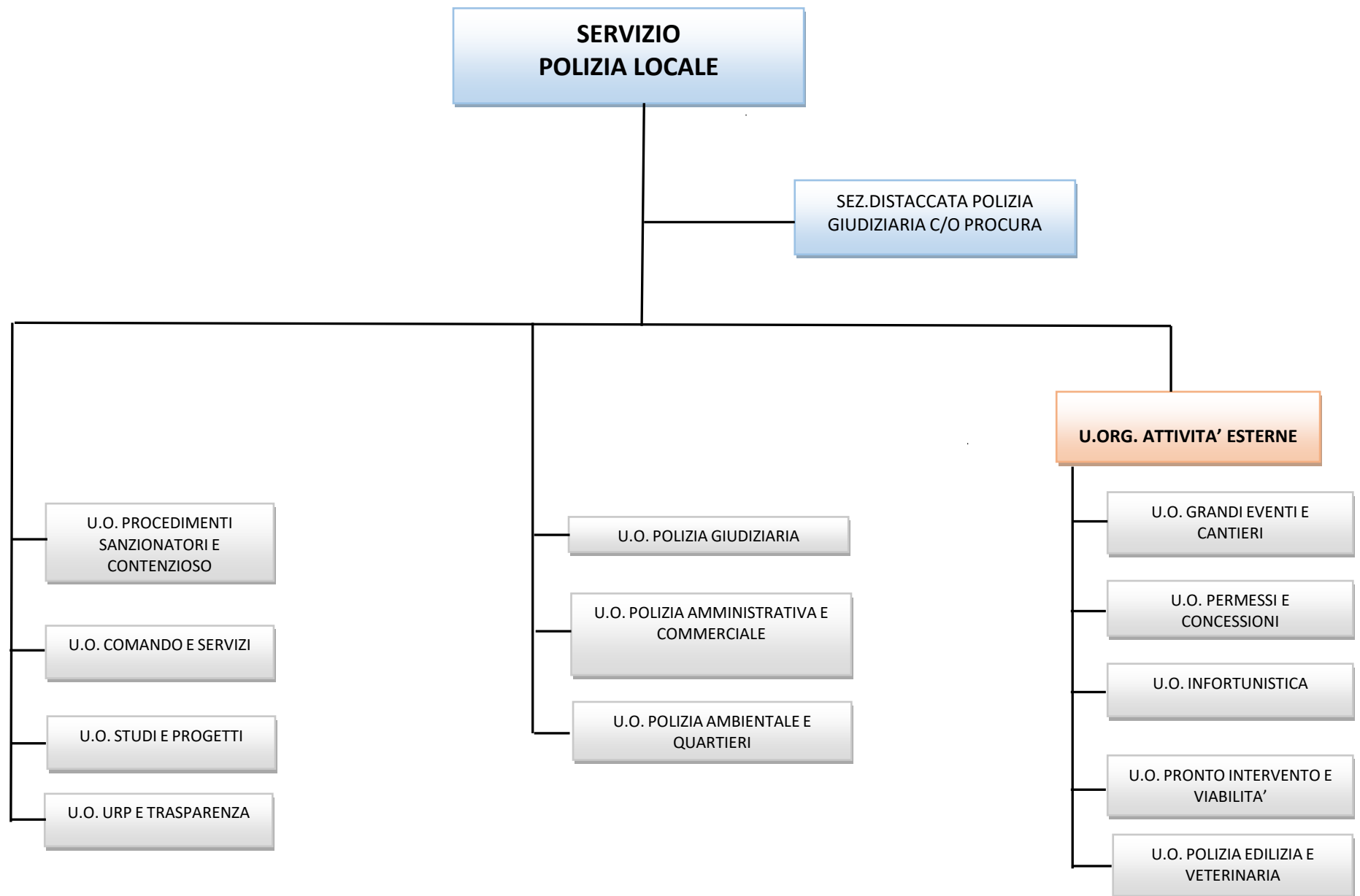
ORGANIGRAMMA
DEL
COMUNE DI UDINE

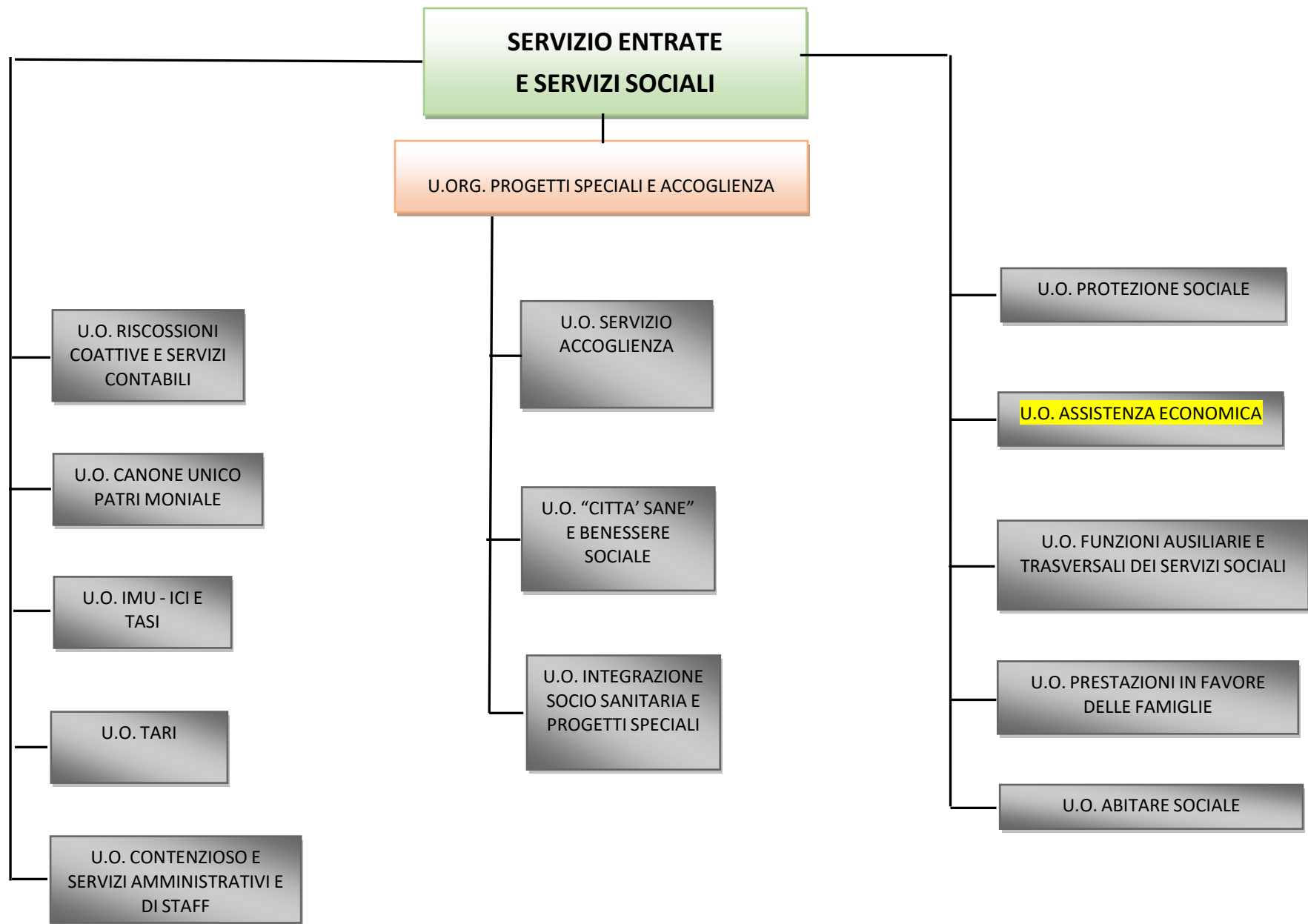


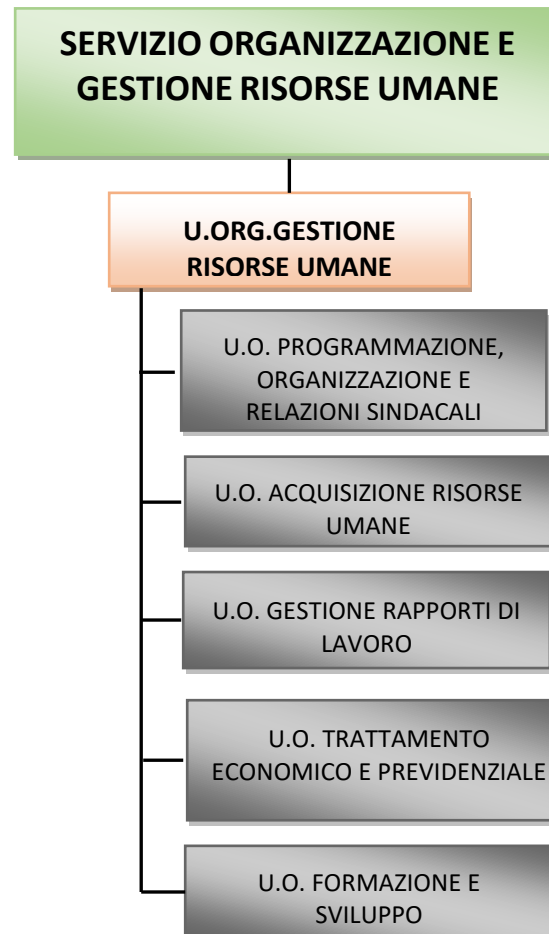


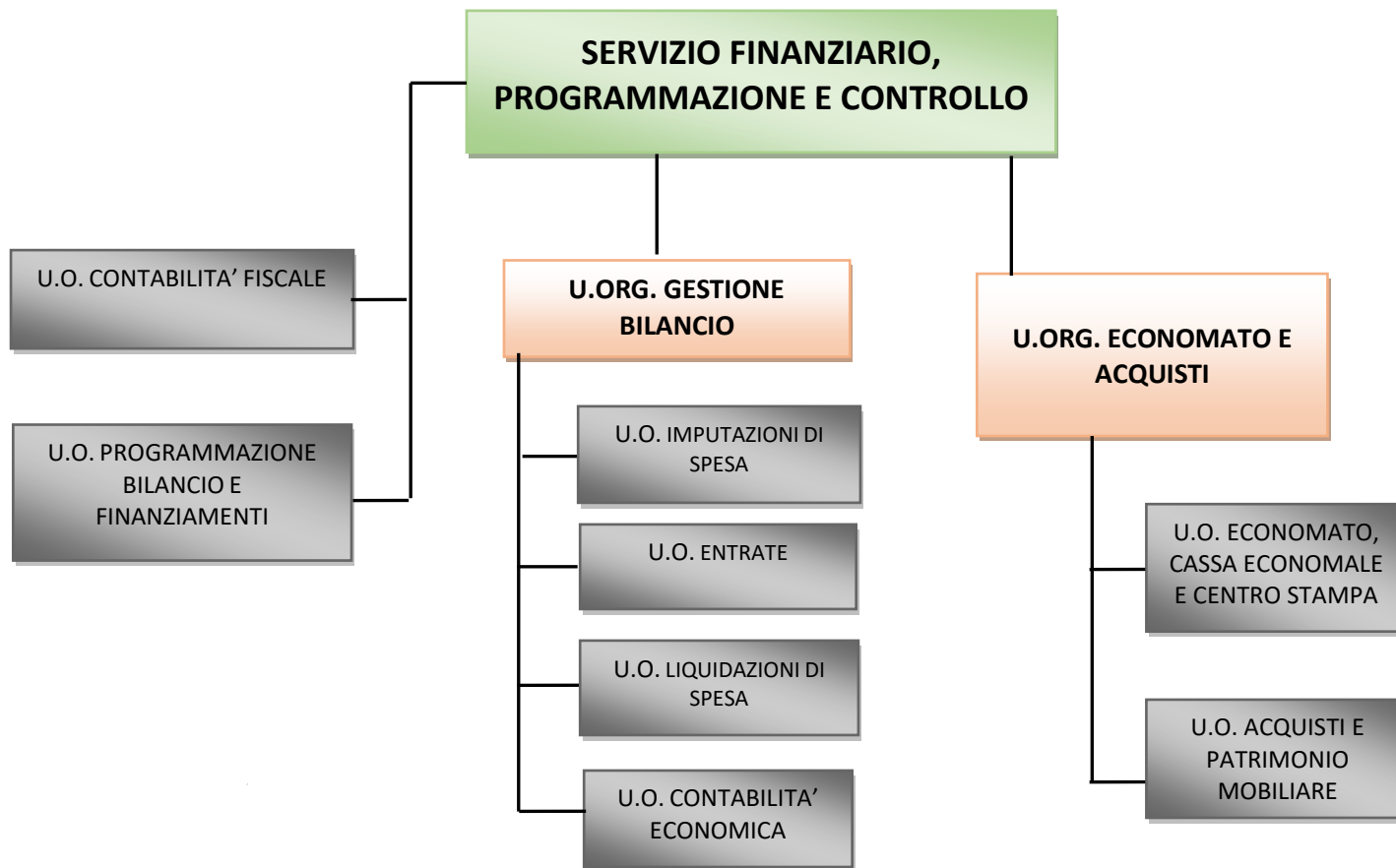


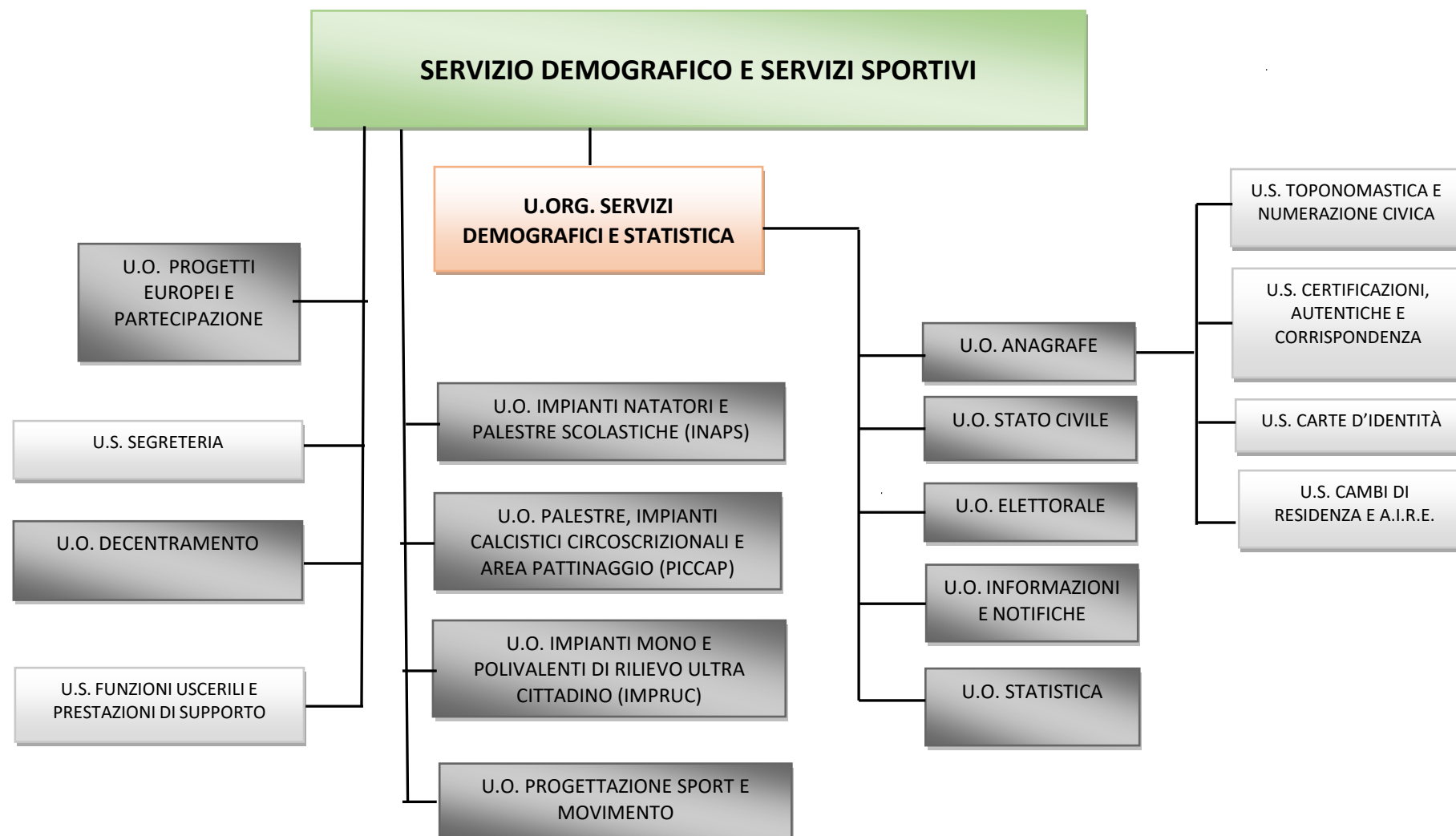


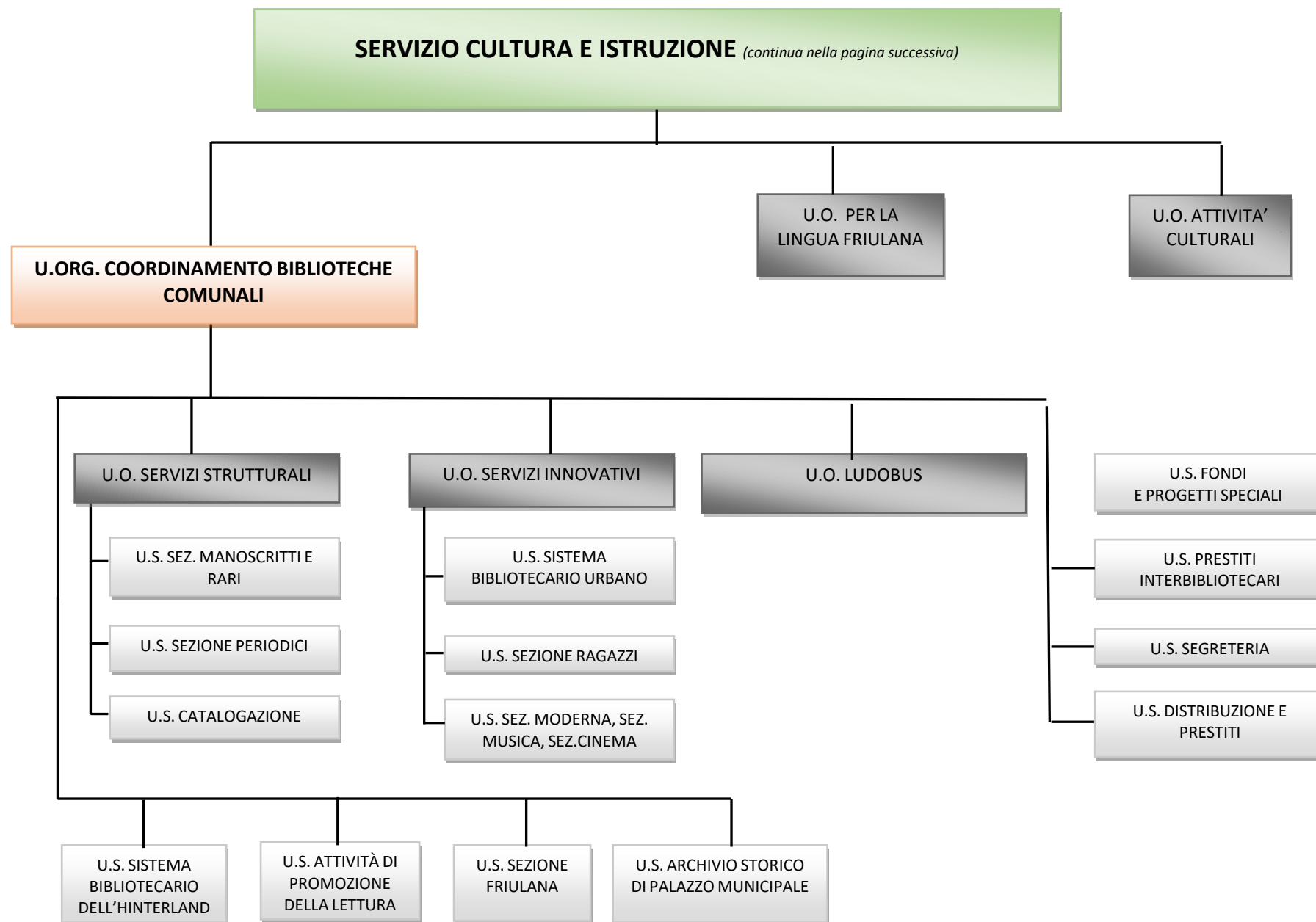


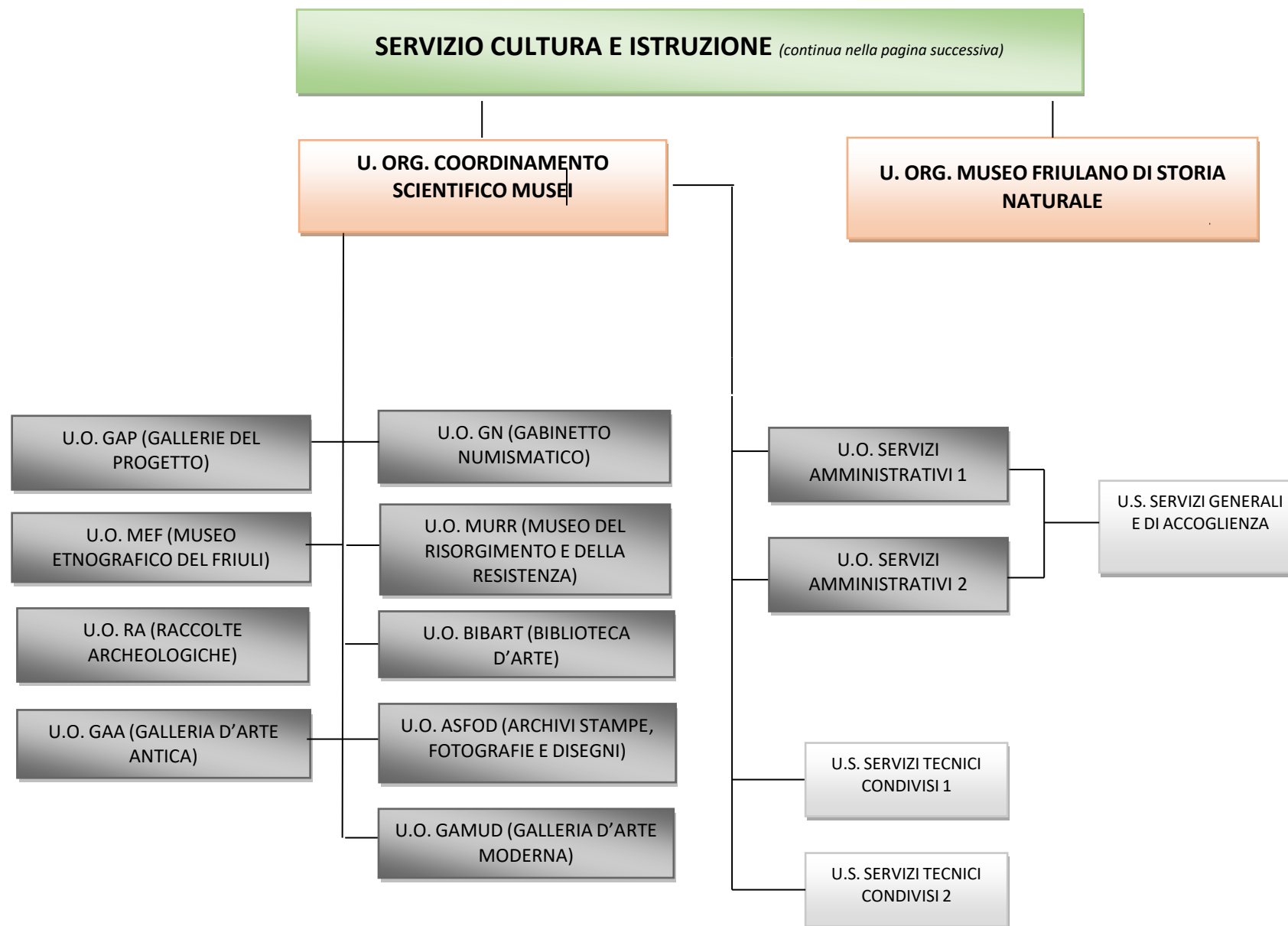




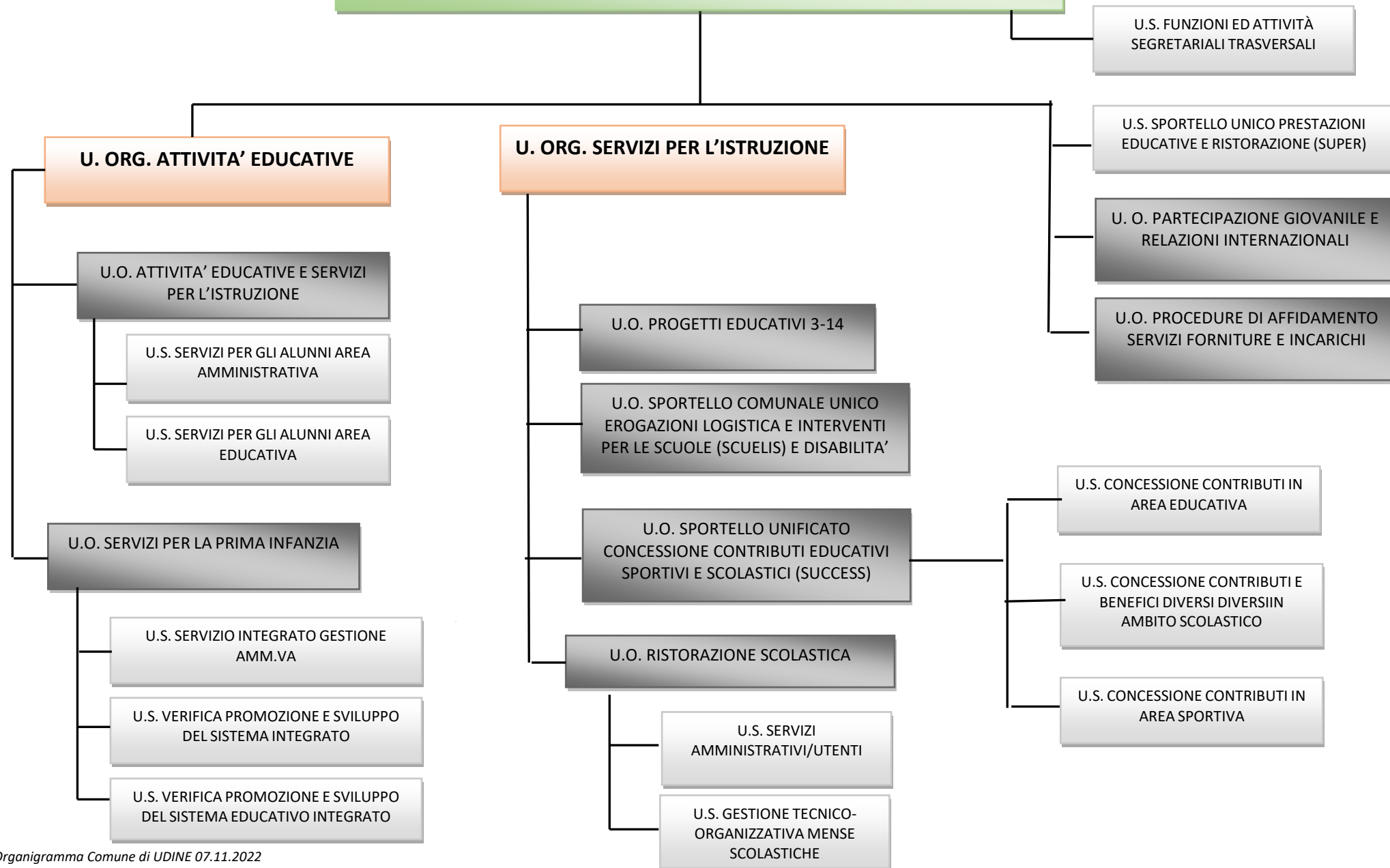


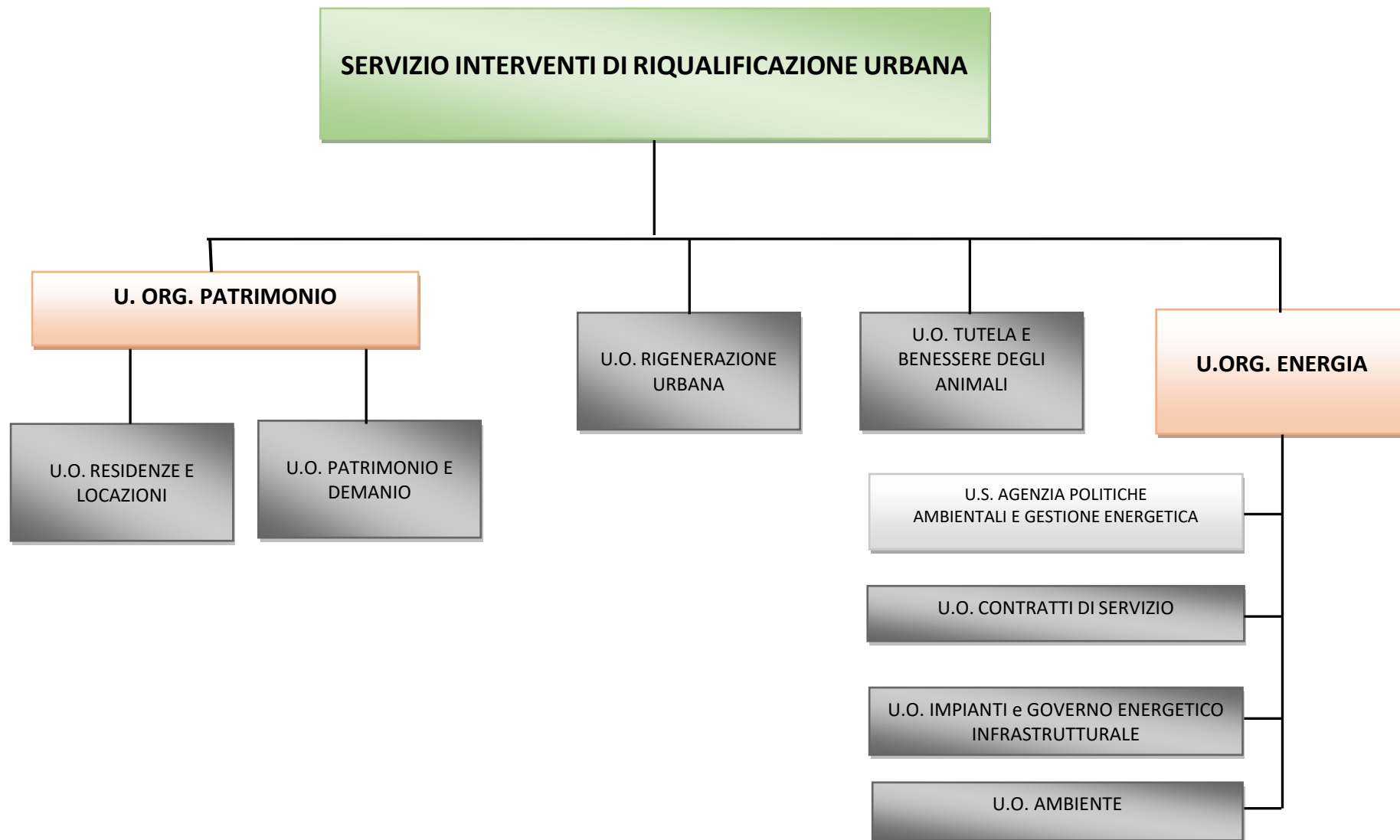


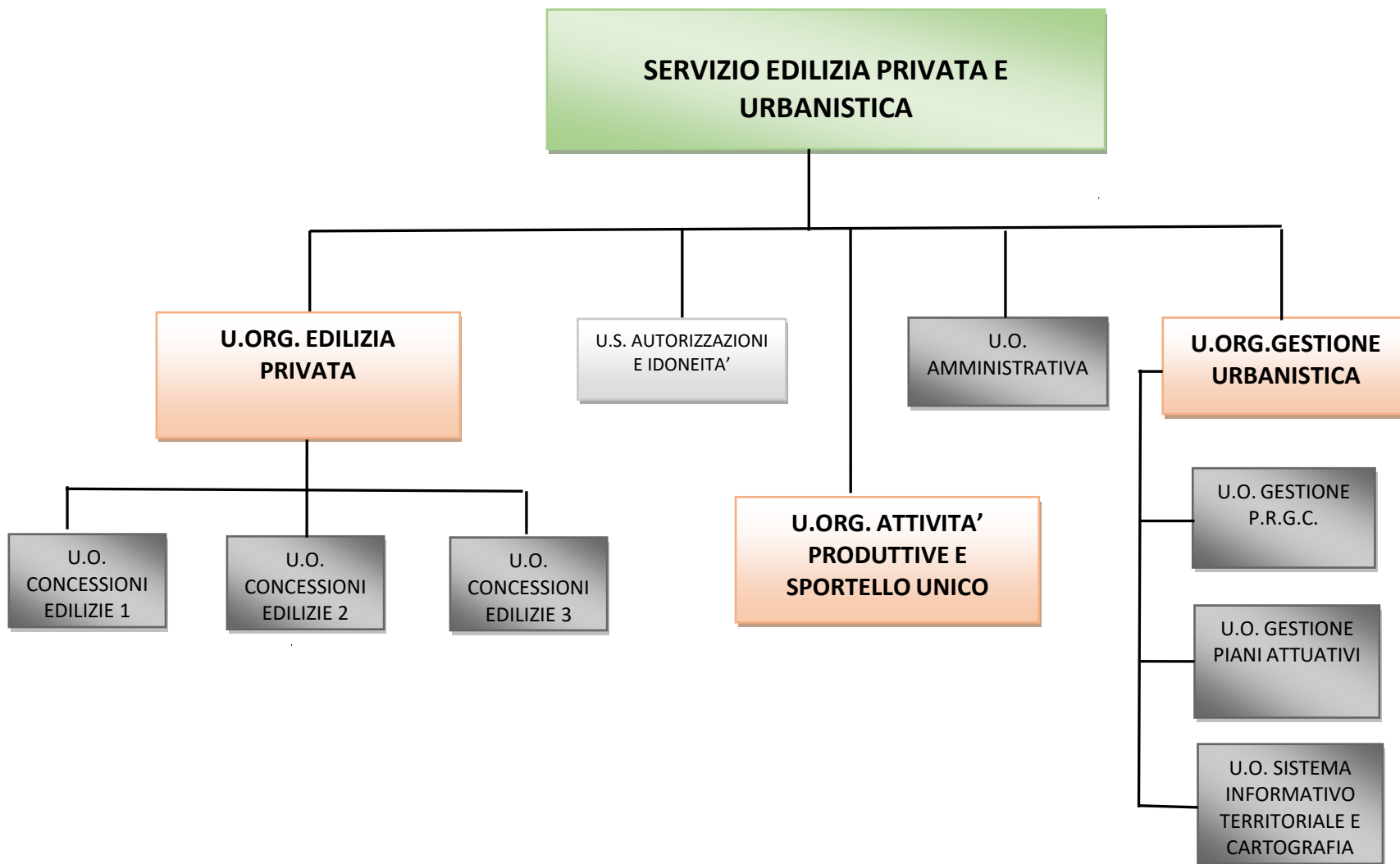


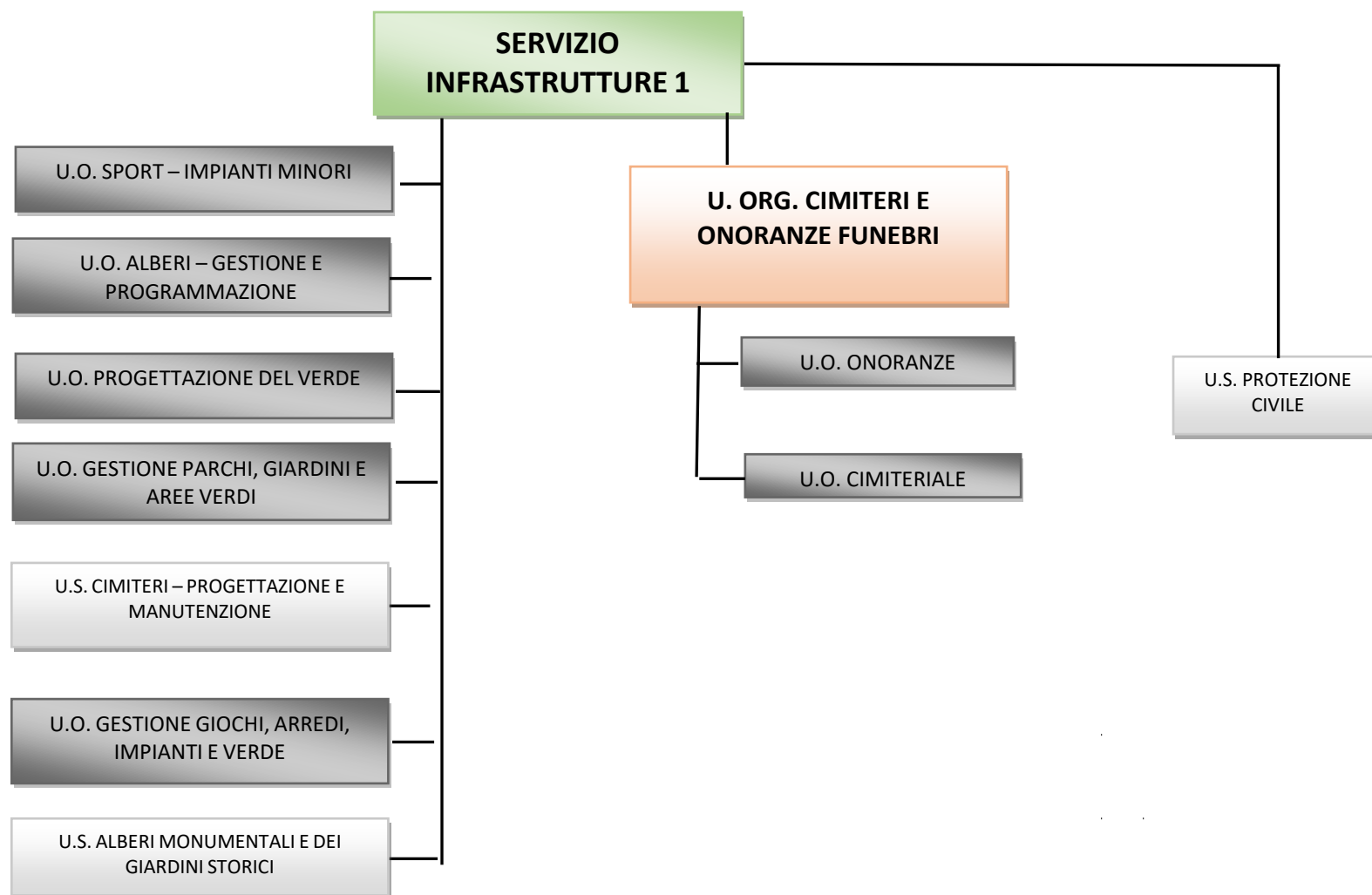


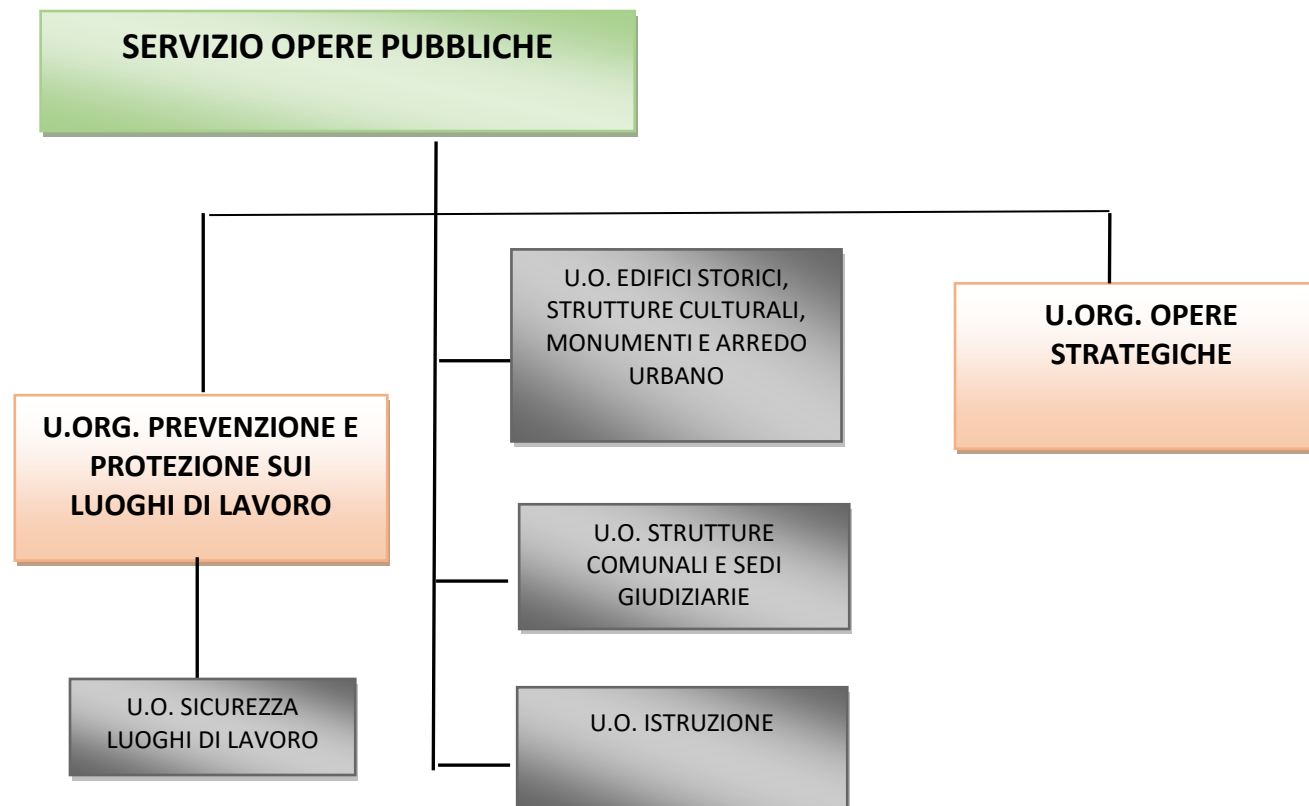
SERVIZIO CULTURA E ISTRUZIONE *(continua nella pagina successiva)*

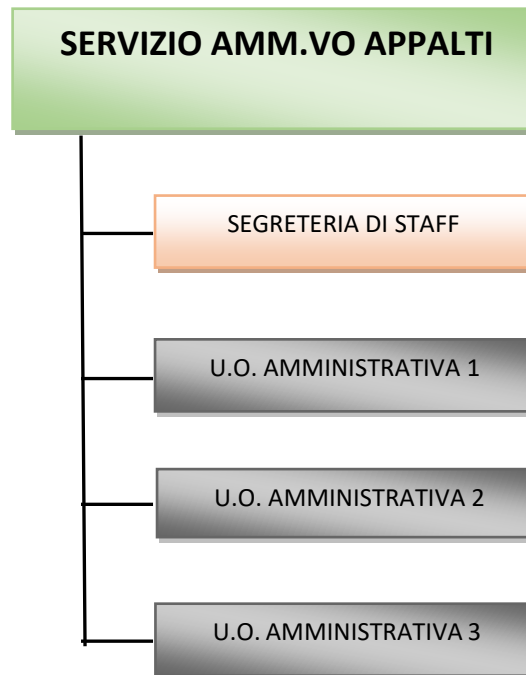


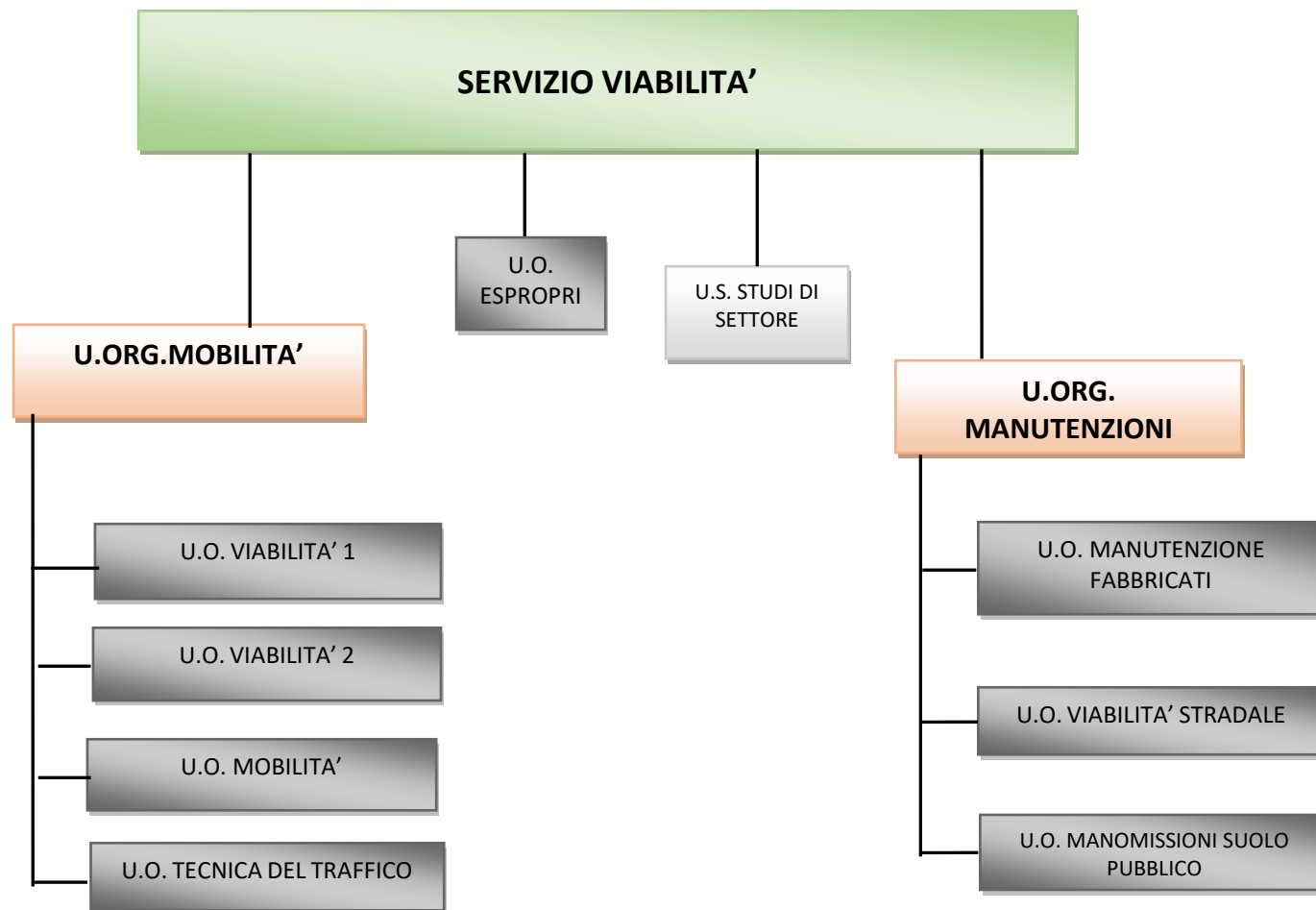




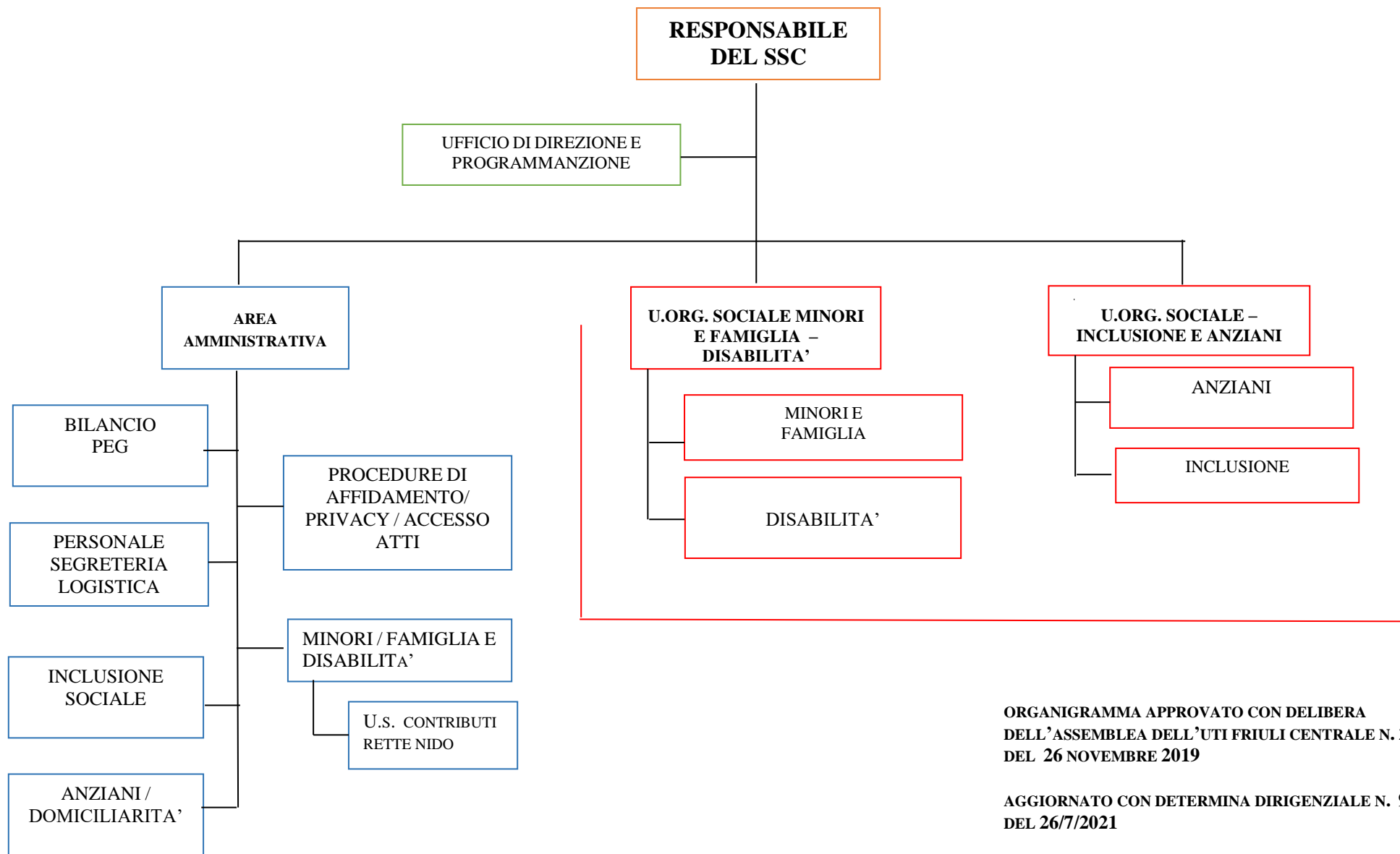








SERVIZIO SOCIALE DEI COMUNI (SSC) DELL'AMBITO TERRITORIALE «FRIULI CENTRALE»



ORGANIGRAMMA APPROVATO CON DELIBERA
DELL'ASSEMBLEA DELL'UTI FRIULI CENTRALE N. 25
DEL 26 NOVEMBRE 2019

AGGIORNATO CON DETERMINA DIRIGENZIALE N. 929
DEL 26/7/2021